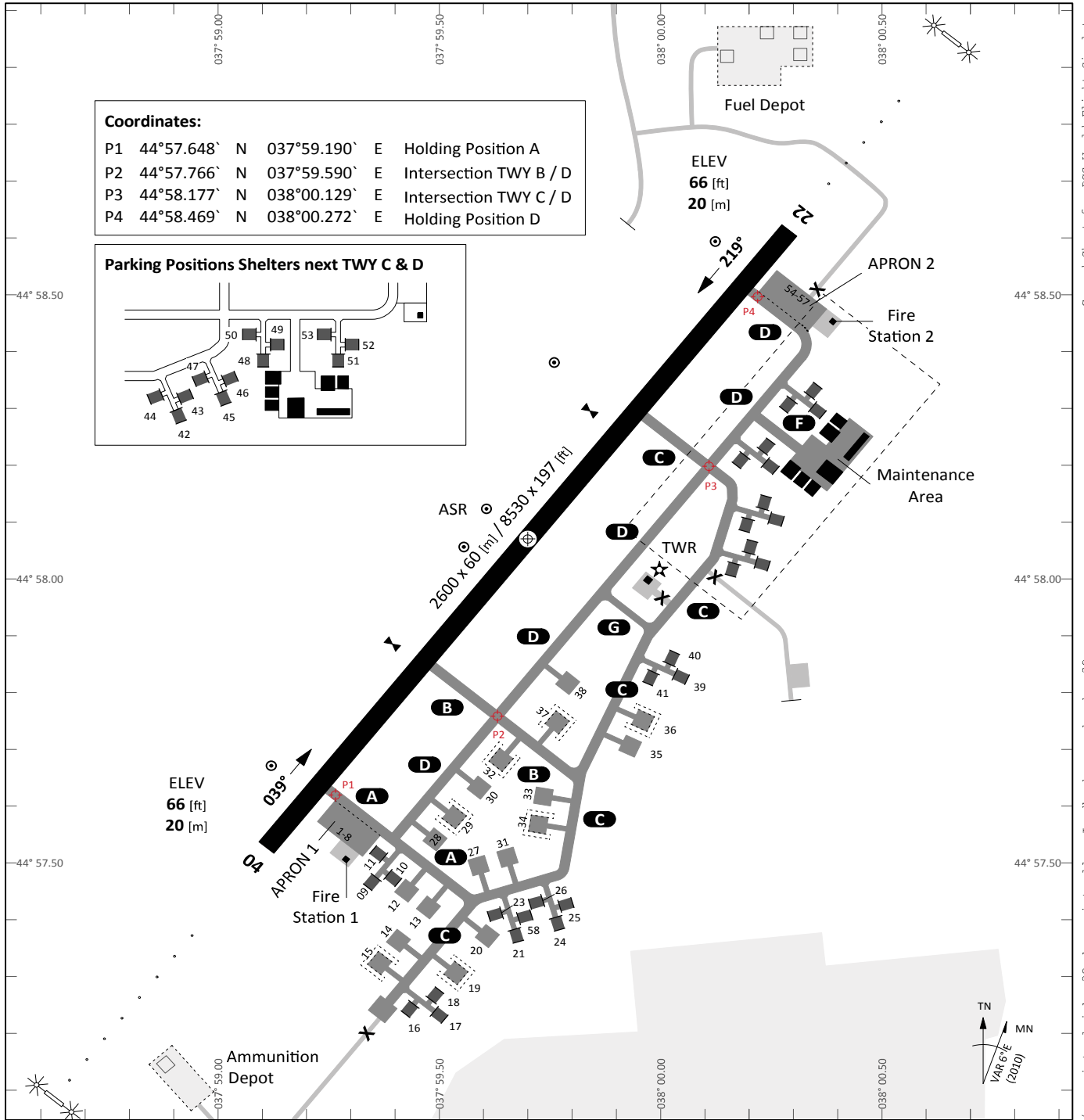


TERPS
AERODROME CHART

GND 17

KRYMSK (URKW)



	RWY	CAT	MINIMA	ARP	ELEV	Scale 1:18'000
PAR	04 - 22	A B C D E	266 - 0.8 200 (200-0.8/1.6) GS 3°	44° 58.073` N	66 [ft]	0 200 400 600 [m] 0 500 1000 1500 2000 [ft]
SRA	04 - 22	A B C D E	416 - 1.2 350 (350-1.2/1.6)	037° 59.697` E	20 [m]	

RWY	TORA	TODA	ASDA	LDA	PSN THR	ALS
04	8530 [ft] 2600 [m]	8530 [ft] 2600 [m]	8530 [ft] 2600 [m]	8530 [ft] 2600 [m]	44°57.562`N 037°59.026`E	⊕
22	8530 [ft] 2600 [m]	8530 [ft] 2600 [m]	8530 [ft] 2600 [m]	8530 [ft] 2600 [m]	44°58.584`N 038°00.369`E	⊕

AI Tower	Human Tower	Radar	Final - Precision	TACAN	ILS
124.000 MHz	124.100 MHz				

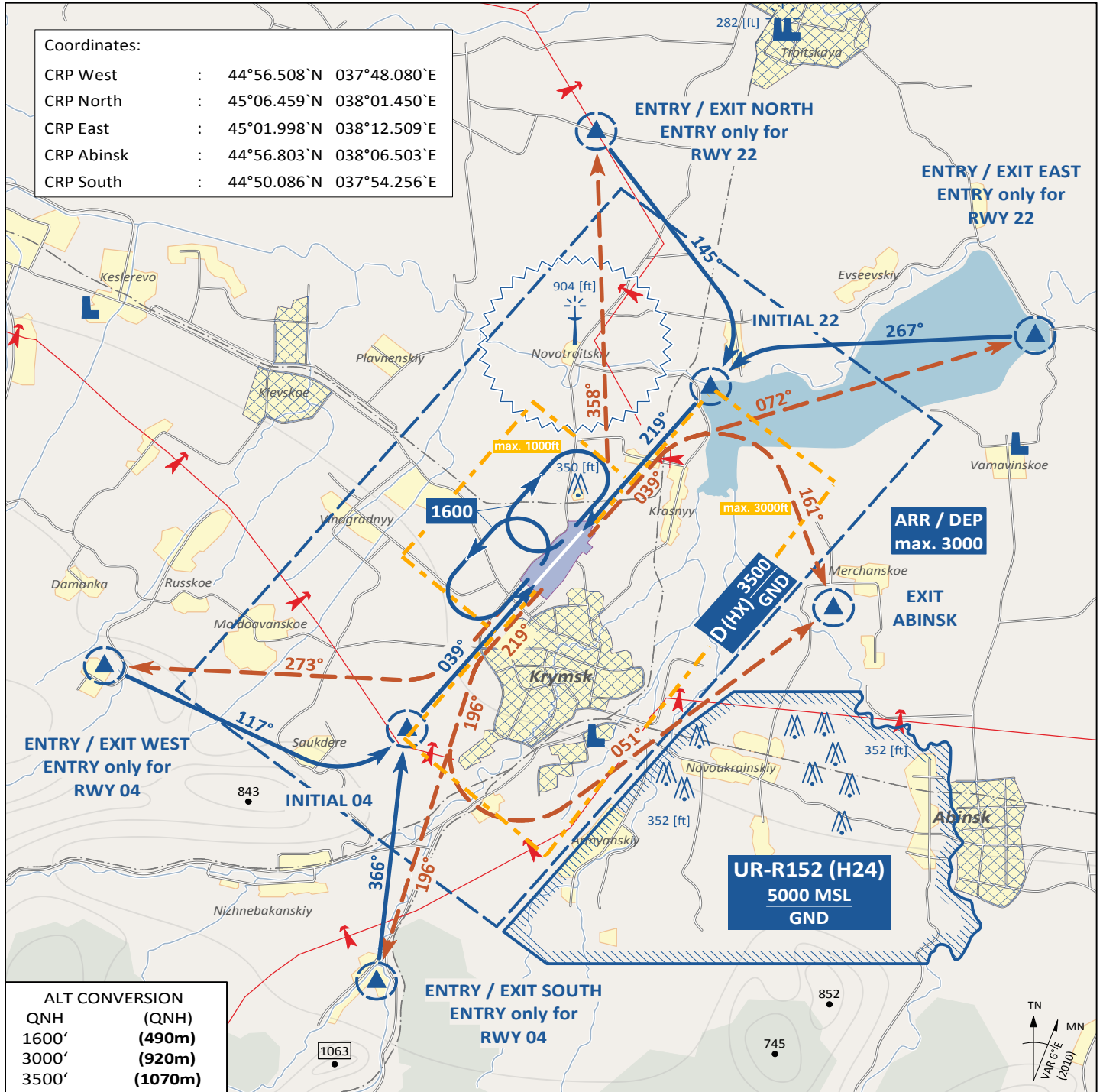
AERODROME CHART

KRYMSK (URKW)

ARR/DEP JET RWY 04/22
VISUAL OPERATION CHART

VAD 17

KRYMSK (URKW)



PSN THR	VAR	ARP	ELEV	Scale 1:200'000
RWY 04 44° 57.562` N 037° 59.026` E	6° E	44° 58.073` N	66 [ft]	0 1 2 3 4 5 6 7 [km]
RWY 22 44° 58.584` N 038° 00.369` E	(2010)	037° 59.697` E	20 [m]	0 1 2 3 [NM]

- Landing instructions shall be requested latest 2 minutes prior to reaching ENTRY CRP
- Avoid overflying of densely populated areas
- Warning: EXIT NORTH RWY 03: Procedure not usable for HIRTA sensitive ACFT
- ACFT leaving CTR via EXIT ABINSK RWY 21 have to proceed exactly on track to avoid restricted area UR-R152.

AI Tower	Human Tower	Radar	Final - Precision	TACAN	ILS
124.000 MHz	124.100 MHz				

ARR/DEP JET RWY 04/22

KRYMSK (URKW)

Visual Operation Chart for DCS World Flight Simulator
 rev 4.0.3 18.05.2013 © vjabog32 - http://www.virtual-jabog32.de - virtuelles Jagdbombengeschwader 32